

Scatter Chart

- [Overview](#)
 - [Chart Data Options](#)
- [Scatter Chart Tutorial](#)
 - [Summary](#)
 - [Tutorial](#)

Overview

[top](#)

Can be used with categorical, sequential or time-series data. Bubble size and location combine to effectively display 3-D data on a 2-D chart.

Chart Data Options

Option	Description
Horizontal Axis	Select the metric or date to use as the x axis measurement.
Vertical Axis	Select the metric or date to use as the y axis measurement.
Size	Optional: Select a metric to set the size of each bubble.
Colour	Optional: You can select one field to split your values by colour.

Scatter Chart Tutorial

[top](#)

Summary

In order to set up a Scatter Chart you will need:

1. Create a report with chart display
 - a. Select a field to use as the **Horizontal Axis**
 - b. Select a field to use as the **Vertical Axis**
 - c. Select a field to use as the **Size** (optional field)
 - d. Select a field to use as the **Colour** (optional field)
2. Create your chart, selecting **Scatter** as the type under the **Analytical** heading
3. Provide the **Horizontal Axis**, **Vertical Axis**, **Size**, and **Colour** options
4. Customise the Chart as required
5. Proceed to the **Output** step
6. **Save** your report

Tutorial

1. Start the **Report** creation process by using one of these methods:

- **Left Side Nav** - open the left side navigation panel, click on Create, select the Report option
- **Top Right Button** - click on the create button, select the Report option.
- **Toolbar** - click on the Create link in the toolbar, select the Report option.

You will now see the **New Report** lightbox.

Left Side Nav

Teresa Pringle
Product Specialist

Create

Report

Standard Dashboard

KPI Dashboard

View

Data Source

Storyboard

Discussion

Task

Dashboards

Top Right

(with Left Side Navigation enabled)

Create

Report

Dashboard Tab

View

Data Source

Storyboard

Discussion

Task

Toolbar

Dashboard

Create

Browse

Administration

Discussion

+ Create

Report

Dashboard Tab

Storyboard

Discussion

View

Data Source

Task

2. Click on the **Ski Team** view in order to use the fields defined within it for creating the report.
3. You will now be taken to the **Data** step of the **Report Builder**.

New Report

Select View

Analyse

Advanced Authoring

Select a view

Search

Advanced

View

Recent Use

Source

Ski Team

New Ski Team

Historical Records

Ski Team

This is a tutorial view for training and demo purposes.

More Details

Not here? Create new

4. Add **Age at Camp**, **Demographic**, and **Athlete Counter** to **Columns**.

Columns

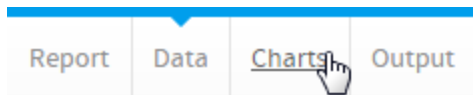
Demographic

Age at Camp

Sum Athlete Counter

Rows

6. Proceed to the **Charts** step of the builder.

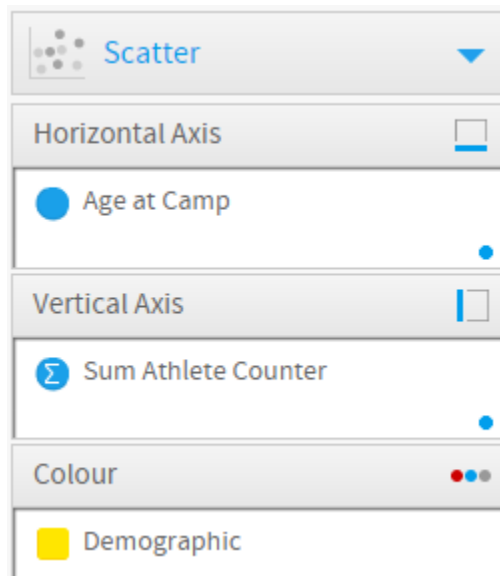


7. Select the **Scatter** chart from the **Analytical** section of the charts panel on the right of the screen.

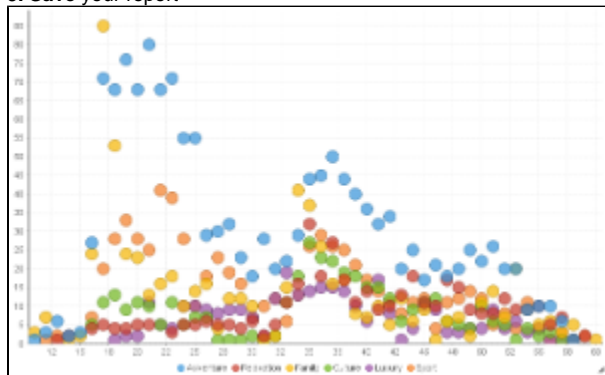


8. Set the following components:

- **Horizontal Axis:** Age at Camp
- **Vertical Axis:** Sum Athlete Counter
- **Colour:** Demographic



9. **Save** your report



[top](#)